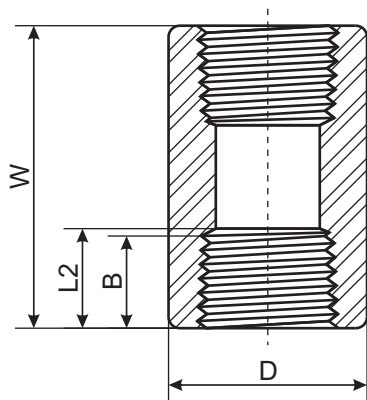
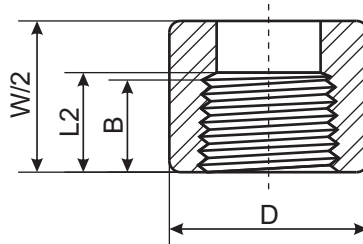


## ► Thread Fittings

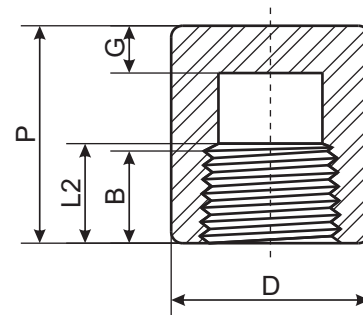
ASME B16.11-2009(Revision of ASME B16.11-2005)



COUPLING



HALF COUPLING



CAP

| DN  | Nom. Pipe Size | Center to End Coupling W | Center to End Cap P |      | Outside Diameter D |      | End Wall Thickness G Min. |      | Length Of Thread Min.(1) |      |
|-----|----------------|--------------------------|---------------------|------|--------------------|------|---------------------------|------|--------------------------|------|
|     |                | 3000&6000                | 3000                | 6000 | 3000               | 6000 | 3000                      | 6000 | B                        | L2   |
| 6   | 1/8"           | 32                       | 19                  |      | 16                 |      | 4.8                       |      | 6.4                      | 6.7  |
| 8   | 1/4"           | 35                       | 25                  | 27   | 19                 | 25   | 4.8                       | 6.4  | 8.1                      | 10.2 |
| 10  | 3/8"           | 38                       | 25                  | 27   | 22                 | 32   | 4.8                       | 6.4  | 9.1                      | 10.4 |
| 15  | 1/2"           | 48                       | 32                  | 33   | 28                 | 38   | 6.4                       | 7.9  | 10.9                     | 13.6 |
| 20  | 3/4"           | 51                       | 37                  | 38   | 35                 | 44   | 6.4                       | 7.9  | 12.7                     | 13.9 |
| 25  | 1"             | 60                       | 41                  | 43   | 44                 | 57   | 9.7                       | 11.2 | 14.7                     | 17.3 |
| 32  | 1-1/4"         | 67                       | 44                  | 46   | 57                 | 64   | 9.7                       | 11.2 | 17.0                     | 18.0 |
| 40  | 1-1/2"         | 79                       | 44                  | 48   | 64                 | 76   | 11.2                      | 12.7 | 17.8                     | 18.4 |
| 50  | 2"             | 86                       | 48                  | 51   | 76                 | 92   | 12.7                      | 15.7 | 19.0                     | 19.2 |
| 65  | 2-1/2"         | 92                       | 60                  | 64   | 92                 | 108  | 15.7                      | 19.0 | 23.6                     | 28.9 |
| 80  | 3"             | 108                      | 65                  | 68   | 108                | 127  | 19.0                      | 22.4 | 25.9                     | 30.5 |
| 100 | 4"             | 121                      | 68                  | 75   | 140                | 159  | 22.4                      | 28.4 | 27.7                     | 33.0 |

(1)Dimensions in Millimeters.

(2)Dimension B is minimum length of perfect thread. The length of useful thread(B plus threads with fully formed roots and flat crests)shall not be less than L2(effective length of external thread)required by American National Standard for Pipe Threads (ANSI/ASME B1.20.1)